

**Springdale Primary School**

**P5**

**Parents' Briefing**

**30 Jan 2026**



# Overview

- Introduction of Year Head, Assistant Year Head & Level Guardian
- Discipline
- Cyber Wellness
- Home–School Partnership
- P5 Level Highlights
- Subject–Based Banding (SBB) at Primary 5



# Introduction of Year Heads & Level Guardian



**Mr Lim Tong Lee**  
Year Head



**Ms Diana Chan**  
Assistant Year Head



**Mr Chew Mou Yi**  
Teacher

Supporting P5 and P6 Student Matters

P5 & P6  
Discipline Level Guardian



# Together We Thrive

Creating a Caring and Enabling  
School Environment for All







# Discipline is an Educative Process

## Educative Discipline Philosophy

Discipline teaches responsibility, empathy, and self-regulation within a **safe & caring environment** where students thrive.

## Promoting Positive Behavior

Discipline helps students **build good habits** and **social-emotional skills** for thoughtful & respectful behaviour.

## Restorative Consequences

Disciplinary consequences are **educative, measured, and restorative** to help students **learn from mistakes**.

## Customised Support for Growth

Enhanced disciplinary consequences are tailored to **support individual student development** effectively.

# Encouraging Positive Behaviour

In our classrooms

- Classroom Routines
- Mindful Breathing
- Mood Meter
- Whole Body Listening

## GRIT Routine

We show grit by being **Ready, Respectful** and **Thankful**



**Greet**

We stand up and say, "Good morning, teacher!" with a smile.  
Let's start every lesson with respect.



**Ready**

Our desks are clean and quiet, with only our pencil case on it.  
We are ready to learn and listen.



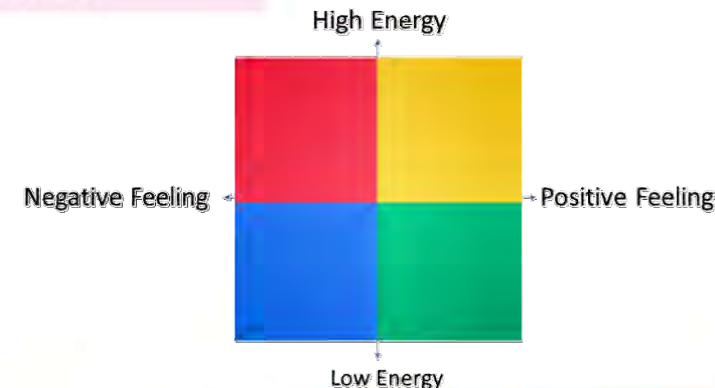
**Interact**

We take turns to share and listen.  
We raise our hands and respect different ideas.  
*Kind words, curious minds!*



**Thank**

At the end of the lesson, we say "Thank you, teacher!" and "Thank you, friends!"  
We are grateful for every learning moment.





# Encouraging Positive Behaviour

During school hours

- Empowering our children to experience a lively recess
- Embracing a range of activities





# Encouraging Positive Behaviour

Peer support leaders leading our students in Anti-Bullying Campaign and Special Education Needs (SEN) Week.





# List of Offences

## Serious Offences

- Truancy
- Vandalism
- Cheating in assessments
- Theft
- Bullying
- Fighting
- Vaping
- Sexual Harassment

## Minor Offences

- Late coming
- Skipping classes
- Improper attire and grooming
- Littering
- Not doing assignments
- Using vulgar language
- Insensitive acts/remarks

Full list of disciplinary offences and measures are found on Pg 12 of Student Handbook.

# Hurtful behaviours and Bullying



# What are hurtful behaviours & bullying?

## Physical

Hitting someone or damaging someone's belongings. It can extend from offline to online platforms

## Social

Leaving someone out of a group or things on purpose

Multiple forms of bullying could be experienced by the same student at the same time or sequentially.

## Cyber

Hurtful behaviours/ bullying that occurs when online technology is used as a means to hurt or upset someone on purpose and repeatedly.

## Verbal

Name-calling, spreading rumours or making threats



# How can I guide my child to be kind & respectful?

Remind them to T.H.I.N.K. before speaking

- Truthful
- Helpful
- Inspiring
- Necessary and
- Kind



**IS IT TRUE?**

Is this a fact or just an opinion or feeling?



**IS IT HELPFUL?**

Does it help you, them, or the situation?



**IS IT INSPIRING?**

Would it encourage, motivate, and make someone feel better?



**IS IT NECESSARY?**

Does it really have to be said, or you just want to or feel like saying it?



**IS IT KIND?**

Are you saying this with the intention to hurt someone's feelings?

# Our firm stance on hurtful behaviours & bullying

**Any form of hurtful behaviour is wrong and unacceptable.  
We will take action when informed of such cases.**

Students, staff and parents can report offences/incidents in these ways:

- Verbal
  - Tell any teacher in the vicinity of the incident
  - Report directly to Discipline Master/Year Head/Form Teacher/Subject Teacher
  - Report directly to School Leaders/General Office
- Written/Email

The school will treat the information with sensitivity. The identity of the person who reported the case will be kept confidential.



# What happens when an incident is reported?

Address	Correct	Replace	Restore
<ul style="list-style-type: none"><li>• Conduct investigations</li><li>• Inform parents of both parties in a timely manner</li><li>• Put in safety measures for all parties</li></ul>	<ul style="list-style-type: none"><li>• Disciplinary consequences and Demerit Points, where necessary</li></ul>	<ul style="list-style-type: none"><li>• Guide students to self-manage and promote positive behaviour</li><li>• Provide support for student(s) involved, with external parties if necessary (e.g. Counselling, referral to REACH)</li></ul>	<ul style="list-style-type: none"><li>• Repair relationships</li><li>• Resolution of conflict between parties</li></ul>



# Demerit Point System: Strengthening Discipline Management in Springdale Primary School



# Demerit Point System

## Why?

- Promote consistency and fairness in the handling of discipline matters
- Provide early monitoring and timely support for students who may need guidance
- Strengthen students' awareness of expectations and consequences
- Support a positive and conducive learning environment for all students

Parents will be informed via Parents' Gateway app when an offence is recorded.



# Demerit Points

## General Guidelines of issuing Demerit Points

Minor offences = 1–2 demerit points

Serious offences = 3 or more demerit points

## Considerations

- Age of student, intent of action, impact of actions, number of prior offences





# Demerit Points

## Important points to note

- Parents will receive a Parents Gateway announcement if student commit any offence
- Accumulation of demerit points will provide useful information to assign the student's semestral conduct grade.
- Students will start every semester with zero demerit points
- Appropriate consequences will be meted out in accordance to nature of offence and demerit points issued



# Cyber Wellness



# What is Cyber Wellness?

Cyber Wellness is the ability of our children and youth to navigate the cyberspace safely.

This is done through our **Character and Citizenship Education (CCE) curriculum** which aims to:

- equip students with the knowledge and skills to harness the power of Information and Communication Technology (ICT) for positive purposes;
- maintain a positive presence in cyberspace; and
- be safe and responsible users of ICT.

Through the curriculum, your child learns knowledge and skills to have balanced screen use, be safe online, and exhibit positive online behaviours.

## Resources

Scan here to find out more about MOE's Cyber Wellness curriculum:



<https://go.gov.sg/moe-cw-education>

# Primary 5 and 6

During CCE(FTGP) lessons, students will be taught:

Be a positive peer influence online and manage digital footprints

- Speak up and stand for what is right regardless of peer pressure
- Seeking help from trusted adults/sources when needed
- Awareness of permanence of online data and review privacy settings

Importance of cybersecurity

- Protect oneself from phishing, spam, scams and hacking

How to verify online falsehoods

- learn what is fake news
- learn how to tell if a website is safe and online information can be trusted



Encourage our children to share their experiences as they navigate friendships.



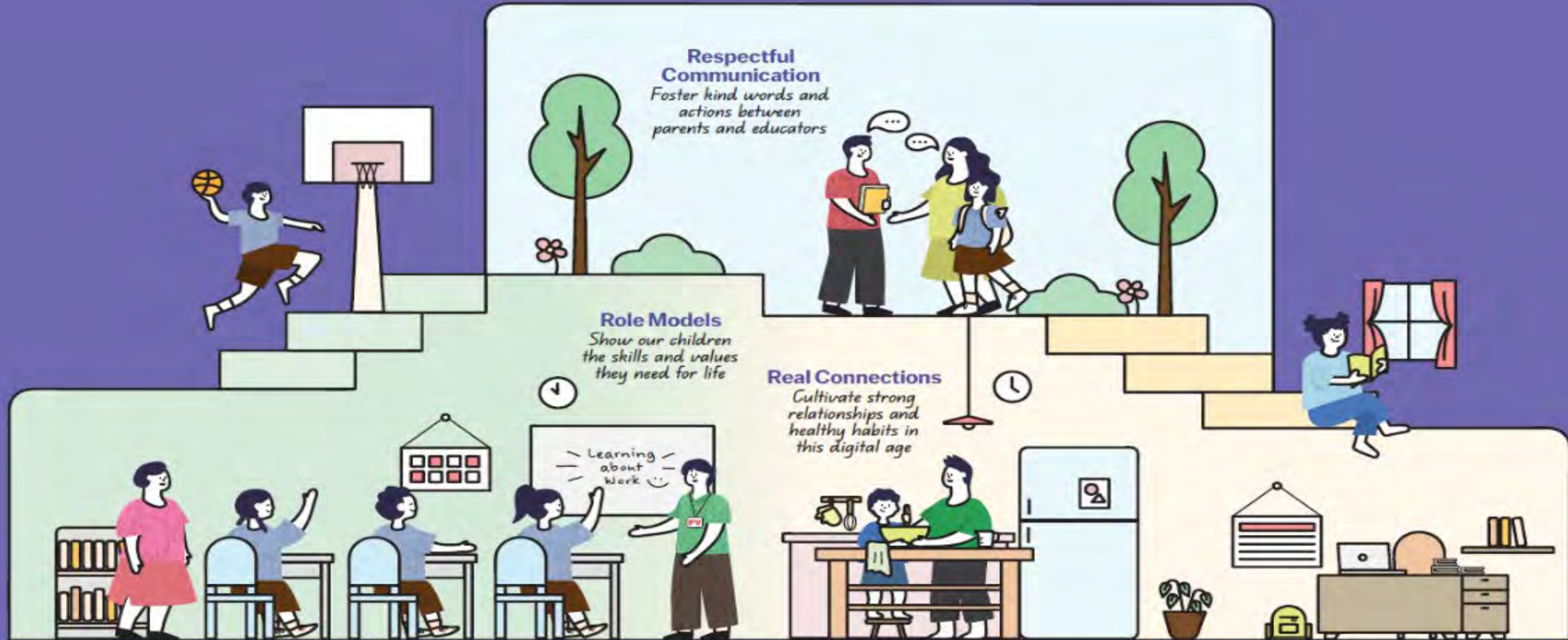
# How Can We Partner Up?

Together, we can raise happy, kind and confident children,  
ready to thrive in the digital world.



Guidelines for School-Home Partnership

# Raising a Happy, Confident, and Kind Generation Together



A joint effort in 2024 by  
the Ministry of Education and COMPASS

## Respectful Communication

Foster kind words and actions  
between parents and educators



- Listen to and understand each other's perspectives and concerns regarding each child.
- Communicate kindly using official channels. Teachers are not required to share their personal mobile numbers.
- Respect each other's time by communicating during working hours.

## Role Models

Show our children the skills and  
values they need for life



- Practise gratitude and find joy in everyday experiences with our children.
- Instil confidence by encouraging responsibility and believing in each child's abilities.
- Model good values in words and actions, at school and at home.

## Real Connections

Cultivate strong relationships and  
healthy habits in this digital age



- Build strong bonds through shared experiences and meaningful conversations.
- Establish good habits for our children to stay confident and in control of their technology use.
- Provide a balanced mix of engaging online and offline activities, at school and at home.



# Let's Work Together

## Save the Date

2026 Parent–Child–Teacher  
Conference (PCTC)

Thu, 28 May 2026  
(Face to Face)

## Communication Channels

- Email, Student Handbook, Parent's Gateway
- Phone Call: If parents would like to speak to teachers over a phone call, please arrange for a suitable time before calling as teachers might be engaged in class or meetings.

## Timing

- Teachers will not be able to respond outside of working hours (7.30 a.m. – 5 p.m)
- For urgent matters, parents should call the General Office during school hours





# Begin your parenting journey with us

@parentingwith.moesg

Follow us on Instagram for bite-sized and actionable parenting tips to tackle the everyday demands of parenting.



# Follow us on Instagram



**springdalites** 🔒

Springdale Primary School

112 posts 1,142 followers 8 following

Education

📌 Official account of Springdale Primary School

"Every Springdalite is a Thriving Learner and a Compassionate... more

71 Anchorvale Link, Singapore 544799

🌐 [www.springdalepri.moe.edu.sg](http://www.springdalepri.moe.edu.sg) and 3 more

Edit profile

View archive



P5 Camp 2025



National Day



NE SHOW '25



PEN'25 🇸🇬



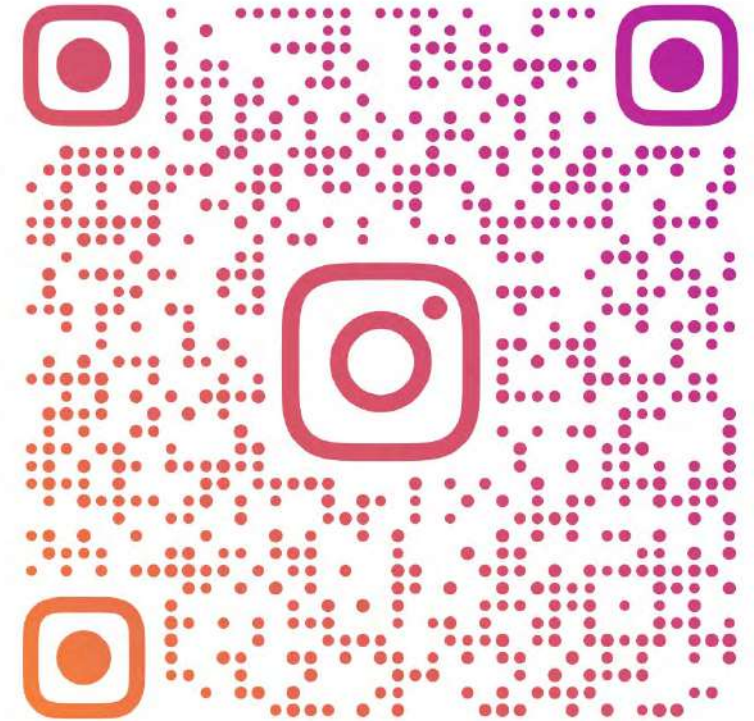
NSG2025



Recess



Assembly 🎤



## SPRINGDALITES

[instagram.com/springdalites](https://www.instagram.com/springdalites)





# P5 Level Highlights



# Code for Fun

- Develop computational thinking through coding
- Strengthen problem-solving and logical reasoning
- Build awareness of emerging technologies, including Artificial Intelligence (AI).





# Goalball Experience

(Changemakers Programme - ALP × PE Department)

- Experience designed to nurture inclusivity and empathy
- Introduced students to Goalball, a sport for persons with visual impairment
- Students played blindfolded, focusing on listening, teamwork, and trust



# SS Learning Journey to Indian Heritage Centre

- Supports Social Studies learning on Singapore's multicultural society
- Deepens understanding of the history, culture, and contributions of the Indian community in Singapore
- Learning beyond the classroom through authentic and interactive experiences





# P5 NE Show

- Reinforces National Education messages and shared values
- Helps students appreciate Singapore's journey, resilience, and unity





# P5 Outdoor Adventure Learning Camp





# P5 Outdoor Adventure Learning Camp

- Focus on resilience, teamwork, and self-management
- Learning through outdoor challenges and shared experiences

20 – 22 April 2026  
@ MOE Labrador  
Outdoor Adventure  
Learning Centre

\*A briefing will be conducted nearer the date, with more specific details given to parents and students.

# Subject-Based Banding (SBB) at Primary 5



# Subject-Based Banding (SBB)

SBB is premised on ability-driven education:

- Student's **aptitude, motivation and performance** in each subject;
- Student's **ability to cope** with a particular subject combination; and
- Whether the subject combination focuses sufficiently on **literacy and numeracy** and facilitates the student's articulation to secondary school and beyond.



# Subject-Based Banding (SBB)

Subject Combination (P5 ➡ P6)

- Standard & Foundation Subjects
- School's decision at the end of P5



# Sharing About PSLE Matters



Intent of PSLE and how scoring works

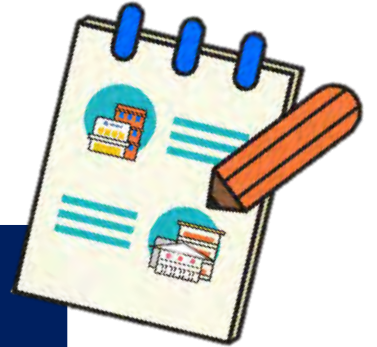
Full Subject-Based Banding in  
Secondary school

# WHAT IS THE INTENT OF THE PSLE?



**A useful checkpoint at the end of primary school**

**A fair way to determine secondary school posting**



Over the years, we have been changing the education system to help our students discover and develop their strengths and interests, while moving away from an over-emphasis on academic results. Our PSLE Scoring changes reduce an over-emphasis on academic results by:

- 1 Reducing fine differentiation of students' examination results at a young age.
- 2 Recognising a student's level of achievement, regardless of how his/her peers have done.
- 3 Encouraging families to choose secondary schools holistically based on students' strengths, interests and abilities.

# WHAT ARE ACHIEVEMENT LEVELS (AL)?

## WHY ARE THE BANDS UNEVEN?

Students with similar scores in each subject are grouped into scoring bands measured in 8 ALs.

AL bands and mark ranges are set based on the learning objectives of the curriculum and mirror the way we learn.

**When we learn something new, after some initial practice, we often find ourselves improving significantly.**

**As we get better, the improvements become small steps, and finally, as we reach a high level, we inch just a little further, even after much learning and practice.**


**The ALs were designed to reflect this reality of learning. They help educators, students, and parents know how ready students are to access the curriculum at the next level.**

AL	RAW MARK RANGE
1	$\geq 90$
2	85 – 89
3	80 – 84
4	75 – 79
5	65 – 74
6	45 – 64
7	20 – 44
8	$< 20$

# HOW DOES THE PSLE SCORING SYSTEM WORK?

The overall PSLE Score is made up of 4 subject Achievement Levels (ALs).

The PSLE Score can range from 4 to 32 with 4 being the best



Elena		PSLE Score 14
PSLE Subject	AL Score	
English	2	
Math	2	
Foundation Science	ALA = 6	
Mother Tongue Language	4	



# GRADING OF FOUNDATION SUBJECT GRADES

- Foundation subject grades are graded in scoring bands from AL A to C.
- To derive a student's overall PSLE Score for S1 Posting, AL A to AL C for Foundation level subjects are **mapped to AL 6 to AL 8 of Standard level subjects respectively**.
- This mapping is based on the learning and assessment load of the subjects and informs students of how ready they are for the curriculum in secondary school.

FOUNDATION LEVEL AL	FOUNDATION RAW MARK RANGE	EQUIVALENT STANDARD LEVEL AL
A	75 – 100	6
B	30 – 74	7
C	< 30	8

# UNDERSTANDING FULL SUBJECT-BASED BANDING (SBB)



What is Full SBB?

# WHAT IS FULL SBB?

- Full SBB will be implemented in secondary schools from 2024, and aims for students to:



Have greater ownership of their learning according to their strengths, interests, abilities, talents and learning needs.



Develop a growth mindset and an intrinsic motivation to learn for life.



Have more opportunities to interact with friends of different strengths, interests, abilities and talents.



Have more options for post-sec pathways, while ensuring they have strong fundamentals and can thrive in their chosen pathway.



# FULL SBB: MIXED FORM CLASSES IN LOWER SECONDARY

**With Full SBB:  
Mixed form classes**



Students posted through **PG3**



Students posted through **PG2**



Students posted through **PG1**

- Under Full SBB, students will be placed in mixed form classes in Lower Secondary to ensure a **mix of learner profiles**.
  - Provides students with **more opportunities** to interact with other students of different strengths and interests.
  - Enables students to **build meaningful friendships** and learn to value different perspectives.

# Contact Detail

Mr Sean Lim Tong Lee (Year Head / Upper Primary)

Email address: [lim\\_tong\\_lee@moe.edu.sg](mailto:lim_tong_lee@moe.edu.sg)

Ms Diana Chan (Assistant Year Head / Upper Primary)

Email address: [chan\\_hui\\_min\\_diana@moe.edu.sg](mailto:chan_hui_min_diana@moe.edu.sg)



# Thank You

