

# THANK YOU FOR SUBMITTING YOUR ENTRIES!

HERE ARE YOUR NEXT STEPS FOR THE GALLERY FEATURE:



## INFORM

Inform your principal of the feature.

Confirm that which are the best artwork(s)\* that will be representing your school for the 1 year gallery feature at NMS.

\*We have advised you accordingly.



## ENGAGE

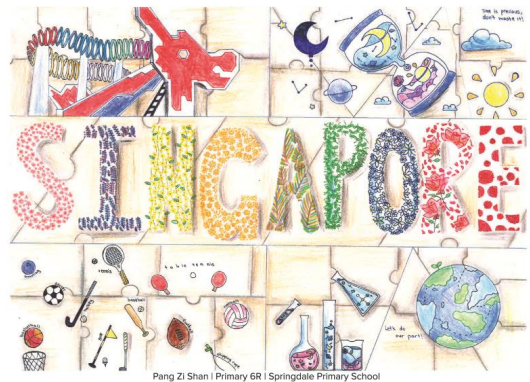
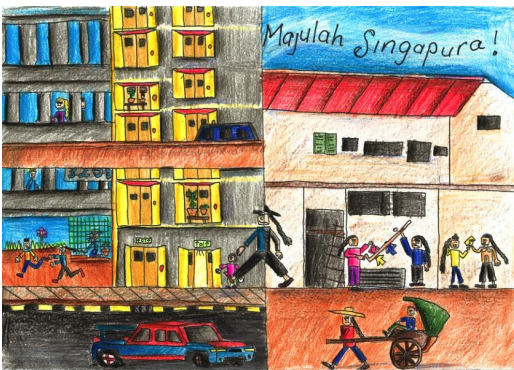
Enhance the writeups with at least one paragraph (50-250 words) of past & present Singapore facts.

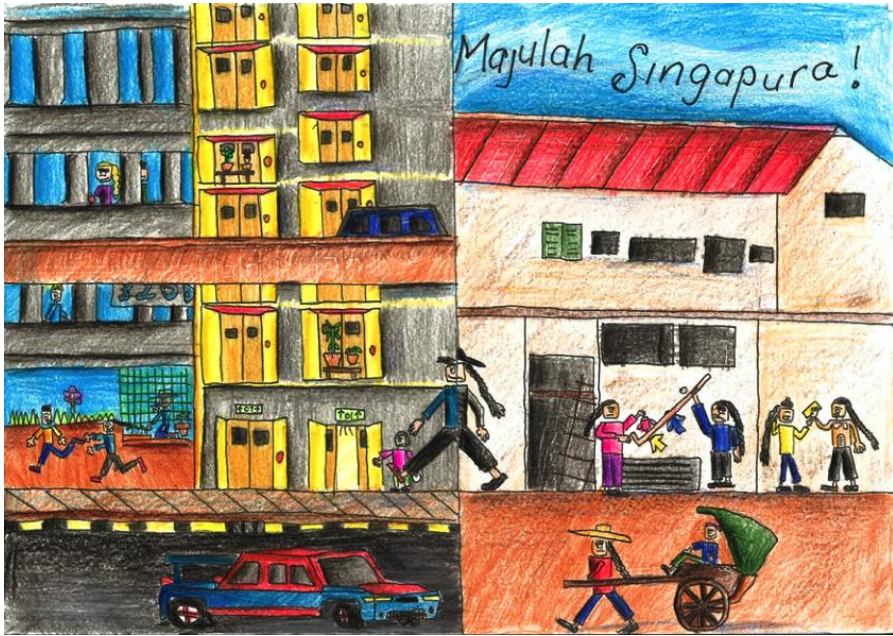
This would be used as part of the gamified / quiz experience for all schools, public and visitors as we come up with customised quizzes tailored for different age groups.

Deadline: 24 July 2020

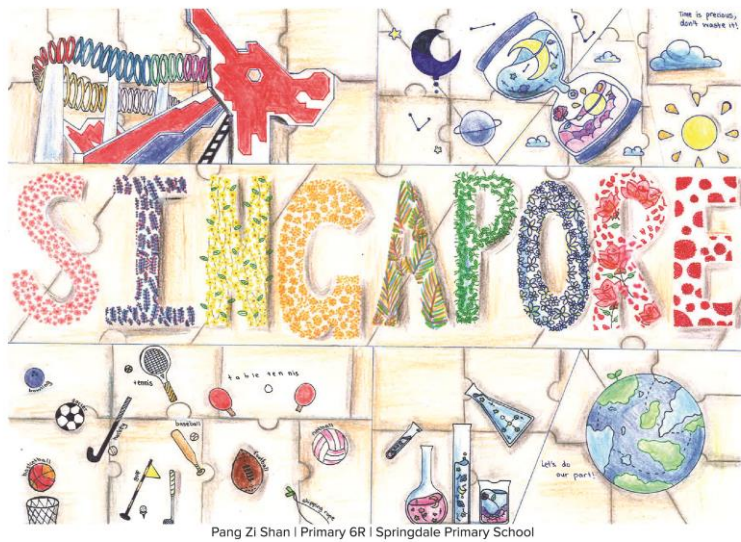
- Exhibited at the National Museum Gallery.

## Springdale Primary School

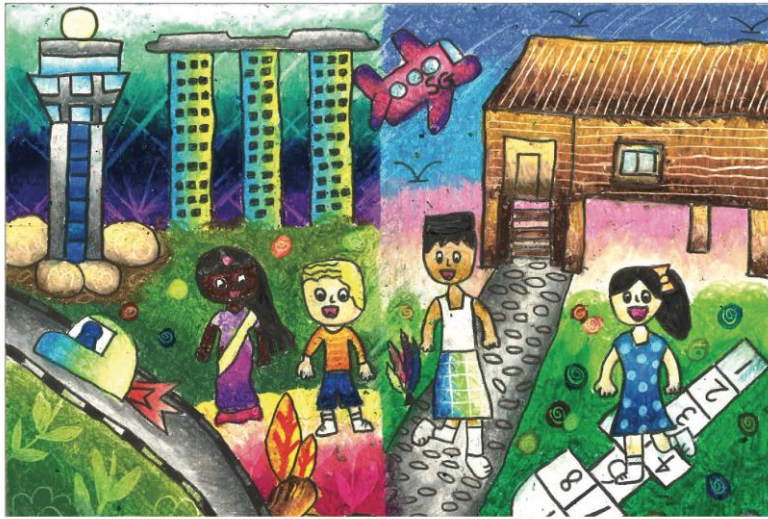




Kasper Lin Jie Yi | Primary 4R  
(2020) | Springdale Primary  
School



Pang Zi Shan | Primary 6A  
(2020) | Springdale Primary  
School



Cera Teng Zi En | Primary 4R | Springdale Primary School

Cera Teng Zi En | Primary 4R  
(2020) | Springdale Primary  
School



Javier Lim Jia Yu | Primary 6G  
(2020) | Springdale Primary  
School